

Instructions

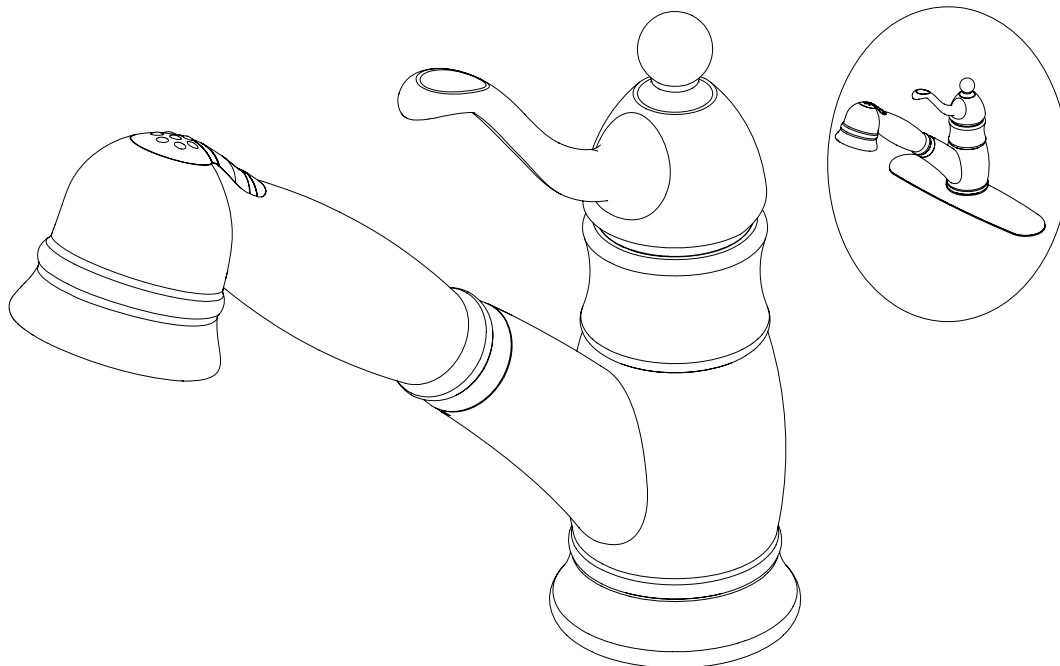


Certifications



127585 – Brushed Bronze
116867 – Chrome
116868 – PVD Brushed Nickel
80-K8-PCCH-AD-Z – Polished Chrome
80-K8-PCBN-AD-Z – PVD Brushed Nickel
80-K8-PCBB-AD-Z – Brushed Bronze

Single Handle, Pull-Out, Kitchen Faucet



*Image may vary slightly from actual product

Tools Required

Adjustable Wrench
Groove Joint Pliers
Pipe Wrench
Phillips Screwdriver
Pipe Tape or pipe thread compound



Safety Tips

If you solder the joints during installation of the faucet, the seats, cartridges, and washers must be removed before using a flame or the warranty will be voided on these parts.

Protect your eyes with safety glasses when cutting or soldering water supply lines.

Cover the sink drain to avoid losing parts.

Things You May Need

Installations may vary depending on how the previous faucet was installed. Supplies necessary for the installation of your faucet are not all included; however, they are available wherever plumbing supplies are sold.

Maintenance

Your new kitchen faucet is designed for years of trouble-free performance.

Keep it looking new by cleaning it periodically with a soft cloth. Avoid abrasive cleaners, steel wool, and harsh chemicals as these will dull the finish and void your warranty.

Important Points

Prior to beginning installation, turn off the hot and cold water lines, then turn on the old faucet to release built-up pressure. When installing your new faucet, turn the connector nuts finger tight, then use one wrench to hold the fitting and a second wrench to tighten the nut. Connections that are too tight will reduce the integrity of the system.

Wrap all threaded connections with PTFE pipe tape available at your local hardware or plumbing supply store. Always wrap in a clock-wise direction.

Contact Us

For Customer Service please call 877-319-3757, or go to homeworksww.com.

Instructions



Certifications

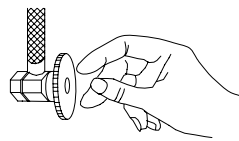


127585 – Brushed Bronze
 116867 – Chrome
 116868 – PVD Brushed Nickel
 80-K8-PCCH-AD-Z – Polished Chrome
 80-K8-PCBN-AD-Z – PVD Brushed Nickel
 80-K8-PCBB-AD-Z – Brushed Bronze

Single Handle, Pull-Out, Kitchen Faucet

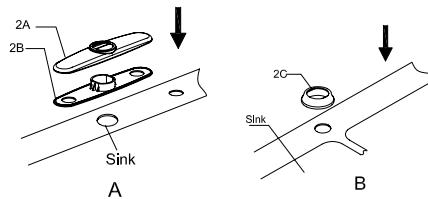
Preparation and Assembly

1



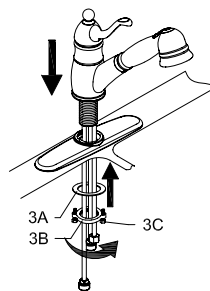
Locate water supply inlet and shut off water supply valve. These are usually found under the sink or near the water heater. Remove old faucet. Clean and dry sink surface area where new faucet will be mounted.

2



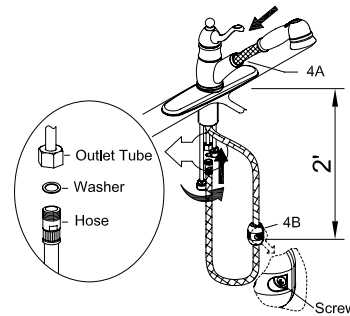
Place base plate (2B) and escutcheon (2A) on the sink (figure A). If you use seat (2C), place the seat on the sink (figure B).

3



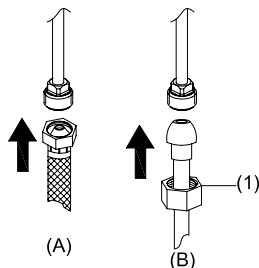
A. Insert supply tubes and shank through hole in sink (or through center hole of escutcheon if used).
 B. Assemble washer (3A), and thread mounting nut (3B) onto shank on the underside of sink. Hand tighten nut and check that rotation of handle from hot to cold is centered.
 C. Firmly tighten the lock screws (3C) to washer (3A). Do not over-tighten.

4



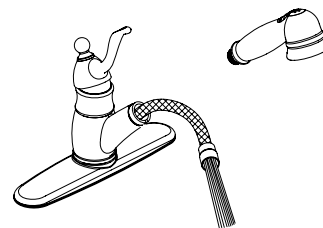
A. Insert small end of the hose through spray holder (4A) and feed it through the main body of the faucet so the spout assembly rests inside the spray holder.
 B. Ensure that rubber washer stays in place on the end of hose.
 C. Connect hose to water outlet tube and tighten. Do not over-tighten. Make sure hose is free of any obstruction.
 D. With spout assembly in spray holder, install weights (4B) onto spray hose using screw. Position weights two feet (2') from the underside of the sink.

5



Connect water supply lines.
 (A) Use 1/2" IPS faucet supply lines or use coupling nuts (not supplied) with ball-nose risers (not included).
 Turn water supply or shut-off valve back on and check for leaks. If leaks occur, gently tighten the faucet connections.

6



To prevent damage to the internal parts of your faucet from debris that may have collected in the water lines, it is necessary to flush the faucet. To flush, remove the sprayhead. Lift the faucet handle up to the full on position. Run water for one minute. Repeat in hot and cold positions. Reassemble the sprayhead to the pull-out hose by turning the metal hose fitting.

Troubleshooting

127585 – Brushed Bronze
116867 – Chrome
116868 – PVD Brushed Nickel
80-K8-PCCH-AD-Z – Polished Chrome
80-K8-PCBN-AD-Z – PVD Brushed Nickel
80-K8-PCBB-AD-Z – Brushed Bronze



Certifications



Single Handle, Pull-Out, Kitchen Faucet

Troubleshooting

PROBLEM: Leaks underneath handle.

CAUSE: Bonnet has come loose

ACTION:

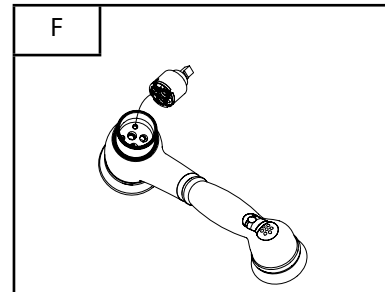
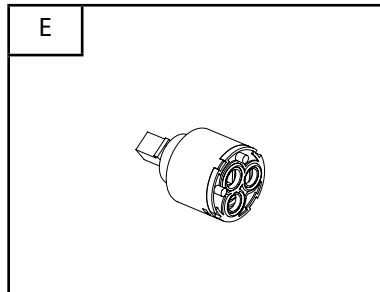
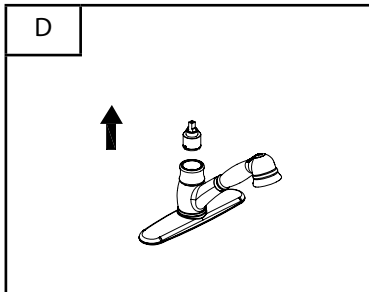
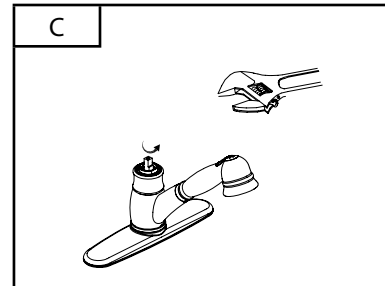
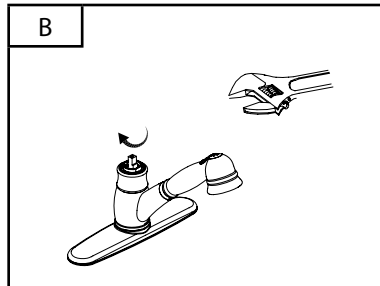
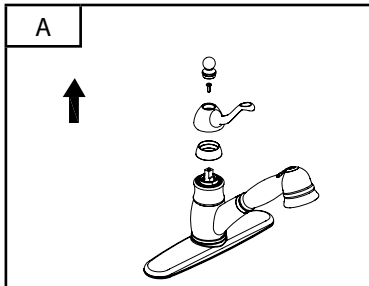
1. Move the handle to the off position. Unscrew the set screw and remove the handle (Diagram A).
2. Tighten the bonnet by turning it clockwise (Diagram B). Move the cartridge stem to the on position. The leaks should stop draining out from around the cartridge stem.

PROBLEM: Water does not completely shut off.

CAUSE: The small rubber valve seats is dirty or twisted.

ACTION:

1. Remove the handle. Loosen the bonnet by turning it counter-clockwise (Diagram C). Lift out the cartridge assembly (Diagram D).
2. Inspect the small rubber valve seats for debris and replace with new valve if necessary (Diagram E).
3. Re-position the cartridge back to the faucet body. Make sure that the wings on the two sides of the cartridge bonnet fit well into the cuts on the two sides of the faucet body (Diagram F). Tightly screw the bonnet onto the faucet body.
4. Re-install the handle.



Specifications



Physical Characteristics

- Description: Single handle kitchen faucet with 8" center distance, brass waterways, ceramic cartridge, pull-out spray and hose
- Optional deck plate included
- Max. Flow Rate: 2.2 GPM (8.3 LPM)
- 1 or 3-hole installation
- ASME A112.18.1/CSA B125 Certified
- Meets ANSI/NSF 61-9 low lead requirements
- This product complies with 0.25% weighted average lead content on wetted surfaces.
- Total Weight of Item: 2080.86g

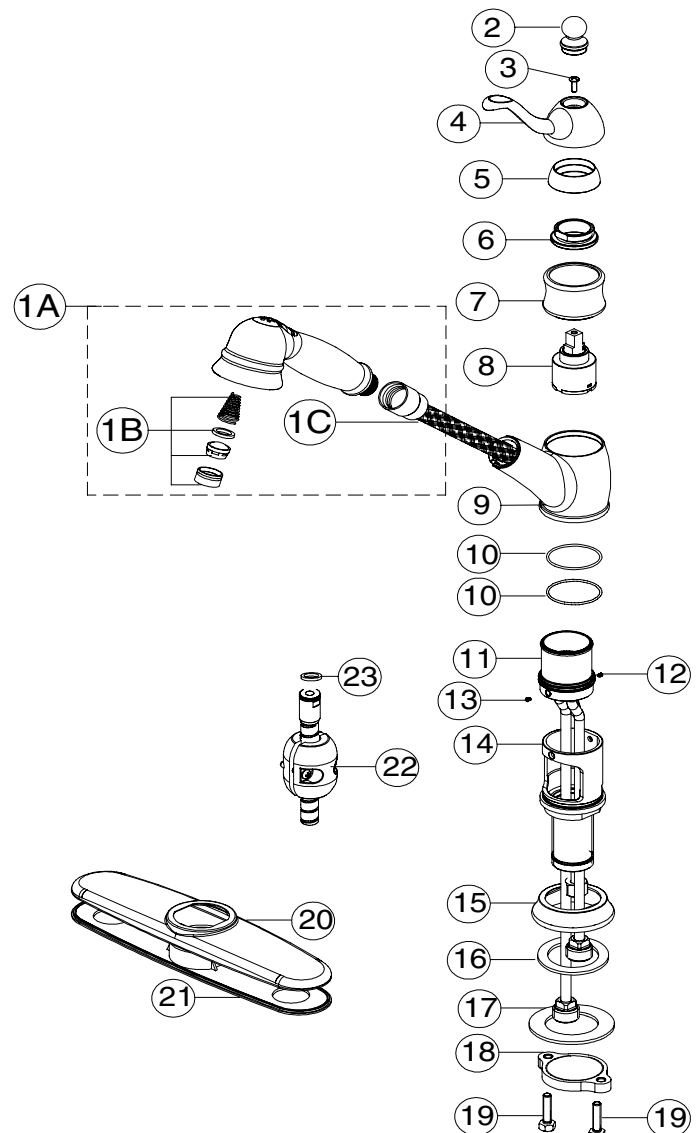
Certifications



CALIFORNIA LEAD
PLUMBING LAW

- 127585 – Brushed Bronze
- 116867 – Chrome
- 116868 – PVD Brushed Nickel
- 80-K8-PCCH-AD-Z – Polished Chrome
- 80-K8-PCBN-AD-Z – PVD Brushed Nickel
- 80-K8-PCBB-AD-Z – Brushed Bronze

No.	Part Description	Material
1A	Spray head Assembly	ABS
1B	Spray diveter spring	SUS304
	Aerator assembly washer	BRASS C37700
	Aerator assembly insert	EPDM SE-519F
	Aerator assembly shell	POM+S.S.
1C	Pull-out supply line hose	NYLON
	Pull-out supply line air gap	POM+S.S.+NBR
	Pull-out supply line washer	RUBBER
2	Handle cap	ZZnA14
3	Handle screw	S.S.304
4	Antique lever handle	ZZnA14
5	Handle cap	ABS PA727
6	Handle bonnet	ABS
7	Handle sleeve	Brass C37700
8	Hot/Cold ceramic cartridge	CERAMIC+POM+S.S. 304 +PA6+SILICONE+PPO
9	Body set screw Body Body inverter	ZZnA14
10	Body O-Ring	NBR N7008F
11	Under Body	C37700+C12200
12	Under body set screw	S.S.304
13	Under body set screw	S.S.304
14	Under body jacket Under body tube Under body tunnel	ABS PA727
15	Deck mounting flange	ABS PA727
16	Deck mounting washer	EVA(30°)
17	Base plate mounting washer	Steel Q235A
18	Mounting Nut	Steel Q235A
19	Mounting nut screw	Steel Q235A
20	Escutcheon	SUS304 (BN) Brass (CH & BB)
21	Base Plate	ABS PA727
22	Pull-out supply line weights	HT100+Q235A
23	Supply line washer	NBR N7008F



Rough-In

- 127585 – Brushed Bronze
- 116867 – Chrome
- 116868 – PVD Brushed Nickel
- 80-K8-PCCH-AD-Z – Polished Chrome
- 80-K8-PCBN-AD-Z – PVD Brushed Nickel
- 80-K8-PCBB-AD-Z – Brushed Bronze



Certifications



Single Handle, Pull-Out, Kitchen Faucet

